



## The Corporation of the Town of Tecumseh

Public Works & Engineering Services

**To:** Mayor and Members of Council

**From:** Phil Bartnik, Director Public Works & Engineering Services

**Date to Council:** October 24, 2023

**Report Number:** PWES-2023-69

**Subject:** Lesperance Road Multi-Use Path, County Road 22 to County Road 42 – Project Update

---

### Recommendations

It is recommended:

**That** Report PWES-2022-69 entitled “Lesperance Road Multi-Use Path, County Road 22 to County Road 42 – Project Update” **be received.**

### Background

In May 2019, Council approved the recommendation of [Report No. PBS-2019-16](#) that endorsed this Multi-Purpose Pathway as a candidate project for funding through the Investing in Canada Infrastructure Program (2019 Intake of the Public Transit Funding Stream). Following this meeting, an application for funding was submitted and ultimately approved by the funding agency. The maximum amount of federal funding available for this project is \$466,707 which will offset Town funds for the total project costs.

In December 2020, Council approved the recommendations of report [PWES-2020-33](#) that authorized Administration to complete the engineering design for the Lesperance Road Multi-Use Trail (County Road 22 to County Road 42) project. In accordance with this report, Dillon Consulting Limited (Dillon) was retained to complete the detailed design.

At the January 26, 2023 Special Meeting of Council, Council approved the recommendations within report [PWES-2023-01](#), titled “2023-2027 Public Works & Engineering Services Five-year Capital Works Plan” that authorized Administration to finalize the design and tender in 2023 and proceed with construction in 2024 for the Lesperance Road Multi-Use Trail, County Road 22 to County Road 42 project (Motion: SCM-04/23).

## Comments

Dillon has progressed to the 75% design stage with Administration providing a comprehensive review and comments in early September 2023. The design includes the alignment of a 2.7m to 3.0m wide path on the west side of Lesperance Road from County Road 22 to County Road 42 encompassing an approximate total length of 3.0km.

The path design features components such as: accessible landings at the County Road intersections, improved street lighting and improvements to crossings at side streets, the installation of a pedestrian crossing near Abraham Cole Park, connectivity with the future pathways along County Road 42, and the installation of trees along the trail where possible.

## Next Steps

Administration plans to hold a Public Information Centre (PIC) with interested parties and adjacent landowners within the corridor of the future Lesperance Road Multi-Use Path to showcase the 75% design drawings, the path location and alignment and address any questions that may arise.

This PIC will be held in an open house format with the preliminary alignment of the entire path displayed on presentation boards. Several members of Administration and Dillon staff will be in attendance to answer any questions and record input.

Once the PIC has been held, the detailed design and tender documents will be completed for this project. Following such, a request for tender will be issued on the Town's Ebids website with construction to follow in early 2024.

## Consultations

Development Services  
Dillon Consulting Limited

## Financial Implications

At the January 26, 2023 Special Meeting of Council, Council approved the recommendations within report PWES-2023-01, titled “2023-2027 Public Works & Engineering Services Five-year Capital Works Plan” that approved a total approved project budget of \$2,798,750 from the Infrastructure Reserve (Motion: SCM-04/23).

This project is supported by the Investing in Canada Infrastructure Program – Public Transit Stream 2019 Intake grant which includes a combined Federal and Provincial contribution of approximately \$466,707.

Following the successful tender of the project, a report will be brought forward to Council to award the construction contract.

## Link to Strategic Priorities

Applicable	2023-2026 Strategic Priorities
<input type="checkbox"/>	Sustainable Growth: Achieve prosperity and a livable community through sustainable growth.
<input checked="" type="checkbox"/>	Community Health and Inclusion: Integrate community health and inclusion into our places and spaces and everything we do.
<input checked="" type="checkbox"/>	Service Experience: Enhance the experience of Team Tecumseh and our citizens through responsive and respectful service.

## Communications

Not applicable

Website

Social Media

News Release

Local Newspaper

This report has been reviewed by Senior Administration as indicated below and recommended for submission by the Chief Administrative Officer.

Prepared by:

Cameron Hedges, P.Eng.  
Engineering Project Manager

Reviewed by:

Brian Hillman, MA, MCIP, RPP  
Director Development Services

Reviewed by:

Phil Bartnik, P.Eng.  
Director Public Works & Engineering Services

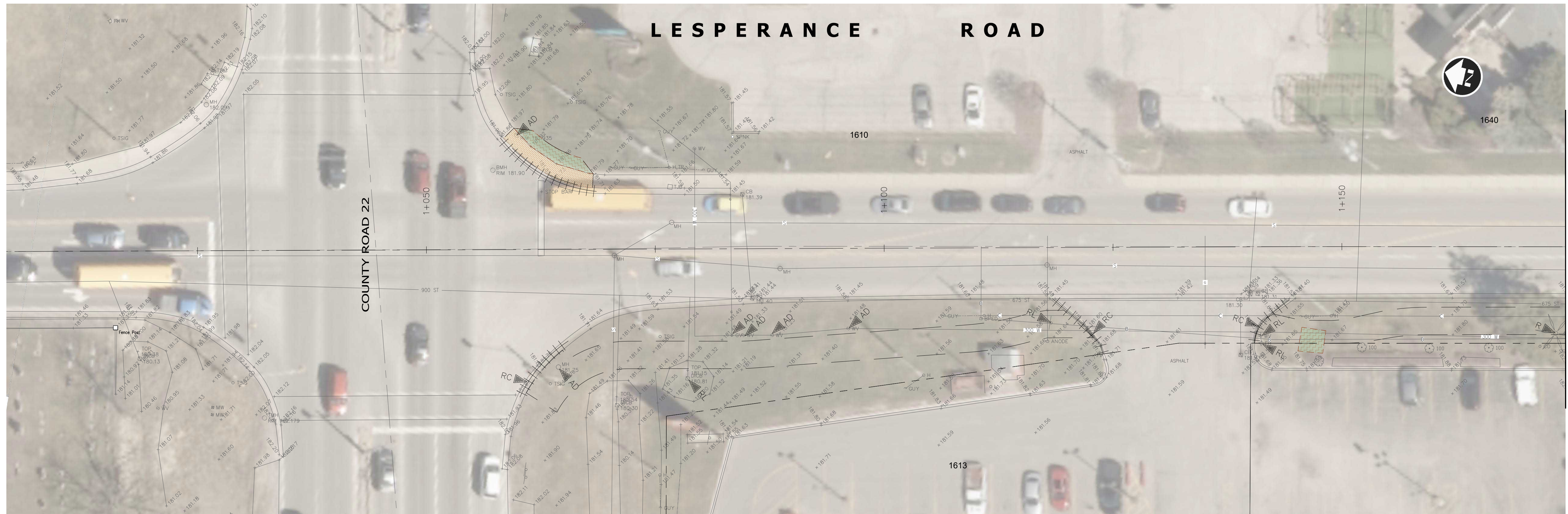
Recommended by:

Margaret Misek-Evans, MCIP, RPP  
Chief Administrative Officer

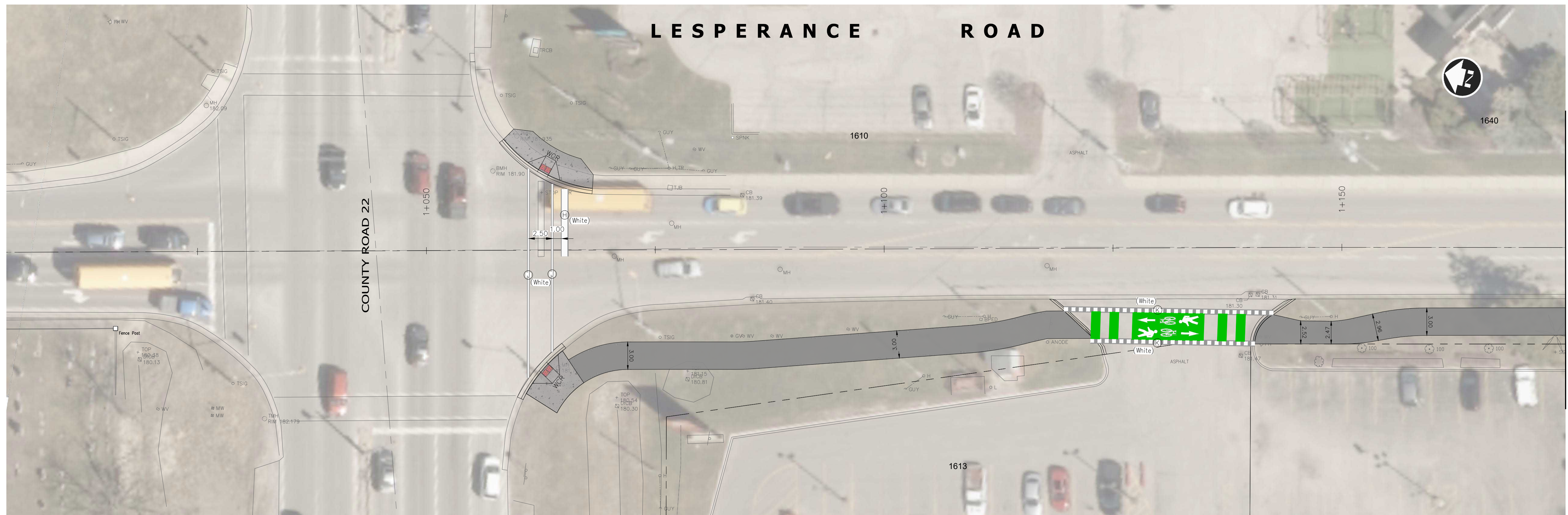
<b>Attachment Number</b>	<b>Attachment Name</b>
1	Lesperance Road Multi-Use Path (CR 22 to CR 42) – 75% Design Drawings



DILLON CONSULTING LIMITED 3200 DEZIEL DRIVE, SUITE 608, WINDSOR, ONTARIO, N8W 8K6. PHONE (519) 948-9000, FAX (519) 948-5054



**EXISTING CONDITIONS & REMOVALS**



**NEW CONSTRUCTION**

- GENERAL NOTES:**
1. THE OWNER AND DILLON CONSULTING LIMITED DO NOT GUARANTEE THE ACCURACY OF THE UTILITIES SHOWN ON THE DRAWINGS. OTHER UTILITIES MAY BE PRESENT OR THE UTILITIES SHOWN MAY DIFFER IN SIZE OR LOCATION FROM THOSE SHOWN. THE CONTRACTOR SHALL NOTE THAT SERVICES FROM THE MAINLINES ARE NOT SHOWN. THE CONTRACTOR ASSUMES FULL RESPONSIBILITY TO CONTACT THE VARIOUS UTILITY COMPANIES AND TO REPAIR ANY DAMAGE IT MAY CAUSE TO THESE UTILITIES OR TO OTHER THIRD PARTIES. THE CONTRACTOR AGREES TO INDEMNIFY THE OWNER AND DILLON CONSULTING LIMITED AGAINST ANY CLAIMS WHICH MAY ARISE FROM THE CONTRACTOR'S ACTIONS.
  2. ALL WORKS TO BE CONSTRUCTED TO A TOLERANCE OF 5mm±.
  3. ALL DIMENSIONS AND RADII ARE TO CONSTRUCTION BASELINE OR EDGE OF PAVEMENT.
  4. CHAINAGES SHOWN REFER TO CONSTRUCTION BASELINE.
  5. ALL VALVE BOXES, MANHOLES, CLEANOUTS, ETC. WITHIN THE PROPOSED WORK THAT ARE TO REMAIN SHALL BE ADJUSTED TO FINISHED GRADE. VALVE BOXES, CLEANOUTS AND METES PITS LOCATED WITHIN HARD SURFACE AREAS ARE TO BE ADJUSTED TO FINISHED GRADES AND FITTED WITH CAST IRON COVERS PER TOWN OF TECUMSEH STANDARDS.
  6. PATHWAY TO MAINTAIN A DESIRED 0.5m (0.3m MINIMUM) SEPARATION FROM ALL VERTICAL OBSTRUCTIONS.
  7. REMOVAL/RELOCATION OF ALL LANDSCAPING FEATURES IS TO BE COORDINATED WITH THE ADJACENT PROPERTY OWNER.
  8. PATHWAY, SHOULDER, AND BOULEVARD TO BE GRADED TO PROVIDE POSITIVE DRAINAGE.
  9. CONNECTIONS TO PVC PIPE: THE CONTRACTOR SHALL BE REQUIRED TO USE ONLY PLANT MANUFACTURED TEES WHEN MAKING CONNECTIONS TO PVC PIPE. THE ANGULAR RISE SHALL BE BETWEEN 5° AND 85°. IF THE ANGULAR RISE EXCEEDS 45° THE CONTRACTOR SHALL PROVIDE AN ADDITIONAL PVC COUPLING WITH STOP IMMEDIATELY BEYOND THE FITTING. A SHORT SECTION OF PVC PIPE IS TO BE USED TO CONNECT THE COUPLING TO THE FITTING. THE COUPLING SHALL REST DIRECTLY UPON THE BELL PORTION OF THE FITTING.
  10. CONNECTIONS TO CONCRETE PIPE: ALL FIELD MANUFACTURED TEES SHALL BE CORED AND CONNECTED USING AN APPROVED MANUFACTURED TEE INCLUDING A STOPPER TO PREVENT PROTRUSION OF THE INCOMING PIPE.
  11. ACCESS TO BUSINESSES AND RESIDENCES IS TO BE MAINTAINED AT ALL TIMES. ACCESS DISRUPTIONS ARE TO BE COORDINATED WITH PROPERTY OWNERS.
  12. ALL ADJUSTMENT RINGS ARE TO BE IPEX RISER RINGS. SANITARY MANHOLE RISERS, LIDS, AND FRAMES SHALL BE SEALED WITH BLUESKIN MEMBRANE AND BRUSH APPLIED PRIMER.
  13. ALL EXISTING SANITARY MANHOLES SHALL BE EQUIPPED WITH RAIN SHIELDS.
  14. ALL CATCHBASIN LEADS TO BE 200mm± PVC DR35 UNLESS NOTED OTHERWISE.
  15. THE CONTRACTOR SHALL COORDINATE THE REMOVAL/RELOCATION OF ALL LANDSCAPING FEATURES WITH THE ADJACENT PROPERTY OWNER(S).
  16. CONNECTION TO EXISTING CURB: EXISTING CURB SHALL BE DRILLED AND DOWELED WITH TWO 15M BARS (ONE WITHIN BACK OF CURB AND ONE WITHIN THE CUTTER, MINIMUM 150mm EMBEDMENT) AND PREMOULDED JOINT FILLER SHALL BE USED WHERE NEW CURB ABUTS EXISTING.
  17. CONNECTION TO EXISTING SIDEWALK: EXISTING SIDEWALK SHALL BE DRILLED AND DOWELED PER THE DETAIL ON SHEET R-15.
  18. THE CONTRACTOR TO IDENTIFY AND RELOCATE ALL EXISTING SPRINKLER SYSTEM COMPONENTS (HEADS, VALVES, PIPING, ETC.) WITHIN THE PROJECT AREA AND RELOCATE TO PROPERTY LINE. ALL SPRINKLER WORKS ARE TO BE COORDINATED WITH THE PROPERTY OWNER.
  19. ALL CATCHBASIN LOCATIONS AND ELEVATIONS TO BE REVIEWED ON SITE PRIOR TO INSTALLATION. LOCATIONS AND ELEVATIONS TO BE ADJUSTED BY THE ENGINEER AS NEEDED TO PROVIDE POSITIVE DRAINAGE.

- PAVEMENT MARKING AND SIGNAGE NOTES:**
1. ALL NEW AND RELOCATED SIGNAGE AND STANCHIONS TO BE INSTALLED UNDER THE DIRECTION OF THE TOWN OF TECUMSEH PUBLIC WORKS DEPARTMENT.
  2. THE CONTRACTOR TO SCHEDULE A SITE MEETING WITH THE TOWN AND ENGINEER TO REVIEW SIGNAGE LOCATIONS PRIOR TO INSTALLATION.
  3. PAVEMENT MARKINGS TO BE IN ACCORDANCE WITH THE LATEST VERSION OF THE ONTARIO TRAFFIC MANUAL.
  4. PAVEMENT MARKINGS SHALL BE ORGANIC SOLVENT-BASED PAINT OR DURABLE THERMOPLASTIC INCLUDING REFLECTIVIZING GLASS BEADS IN ACCORDANCE WITH OPSS 1712, 1713 AND 1750.
  5. PAVEMENT MARKINGS SHALL BE PLACED WITHIN 5 DAYS OF ASPHALT PLACEMENT.
  6. FOR PAVEMENT MARKING LEGEND, REFER TO DETAIL SHEET R-15.

**LEGEND**

**REMOVALS LEGEND**

- R ► REMOVE
- RR ► REMOVE & REPLACE MH FRAME & COVER
- AD ► ADJUST
- RL ► RELOCATE
- RC ► REMOVE CURB
- RLO ► RELOCATE BY OTHERS
- RBO ► REMOVE BY OTHERS

- ASPHALT REMOVAL
- CONCRETE REMOVAL (INCLUDING ROADWAY, SIDEWALK, DRIVEWAY, MEDIAN AND ISLANDS)
- BRICK PAVEMENT REMOVAL
- MILL 40mm DEPTH
- TREE, SHRUB AND LANDSCAPE REMOVAL

**NEW CONSTRUCTION LEGEND**

- CONCRETE DRIVEWAY & SIDEWALK
- ASPHALT PATHWAY & DRIVEWAY
- TOPSOIL 100mm THICK AND SEED RESTORATION
- WCR WHEELCHAIR RAMP (OPSD 310.030 AND 310.033)
- CONCRETE CURB

**Conditions of Use**

Verify elevations and/or dimensions on drawing prior to use. Report any discrepancies to Dillon Consulting Limited.

Do not scale dimensions from drawing.

Do not modify drawing, re-use it, or use it for purposes other than those intended at the time of its preparation without prior written permission from Dillon Consulting Limited.



DESIGN	DCR	REVIEWED BY	
DRAWN	DCR	CHECKED BY	
DATE	October 15, 2023	SCALE	Horizontal 1:250
2	TOWN REVIEW 75%	OCT 16/23	DCR
1	TOWN REVIEW - 60%	JUL 2023	DCR
No.	ISSUED FOR	DATE	BY

**Lesperance Road Multi-Use Pathway**  
(County Road 22 to County Road 42)

Existing Conditions, Removals & New Construction

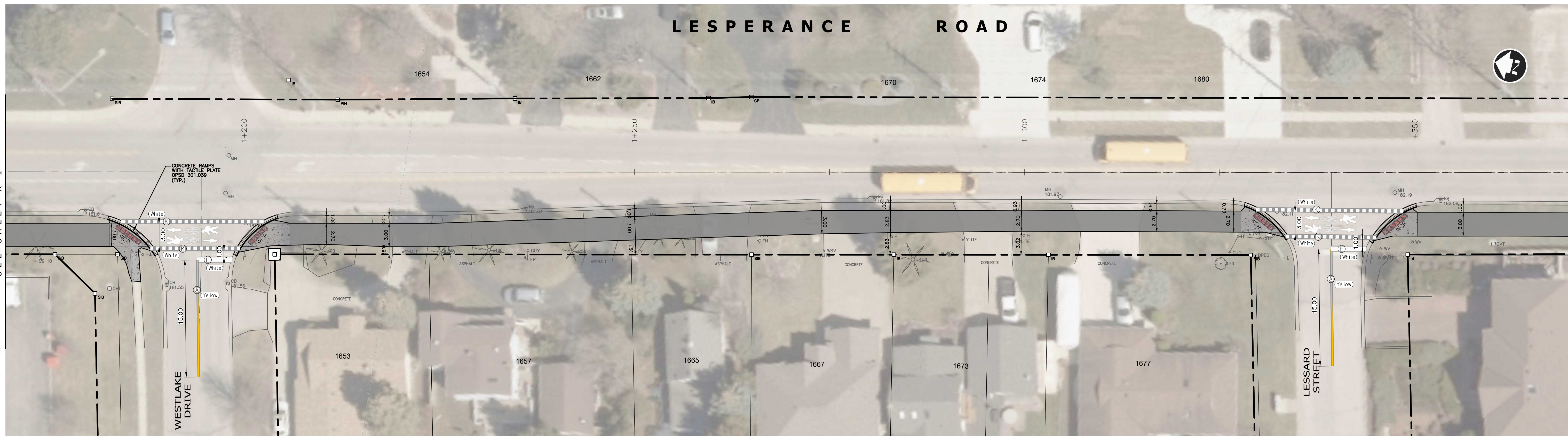
**LESPERANCE ROAD**

# LESPERANCE ROAD



**EXISTING CONDITIONS & REMOVALS**

# LESPERANCE ROAD



**NEW CONSTRUCTION**

DILLON CONSULTING LIMITED 3200 DEZIEL DRIVE, SUITE 608, WINDSOR, ONTARIO, N8W 8K6, PHONE (519) 948-9000, FAX (519) 948-9054

SEE SHEET R-1

SEE SHEET R-1

SEE SHEET R-3

SEE SHEET R-3

**Conditions of Use**  
 Verify elevations and/or dimensions on drawing prior to use. Report any discrepancies to Dillon Consulting Limited.  
 Do not scale dimensions from drawing.  
 Do not modify drawing, re-use it, or use it for purposes other than those intended at the time of its preparation without prior written permission from Dillon Consulting Limited.



Town of  
**Tecumseh**  
 Ontario, Canada

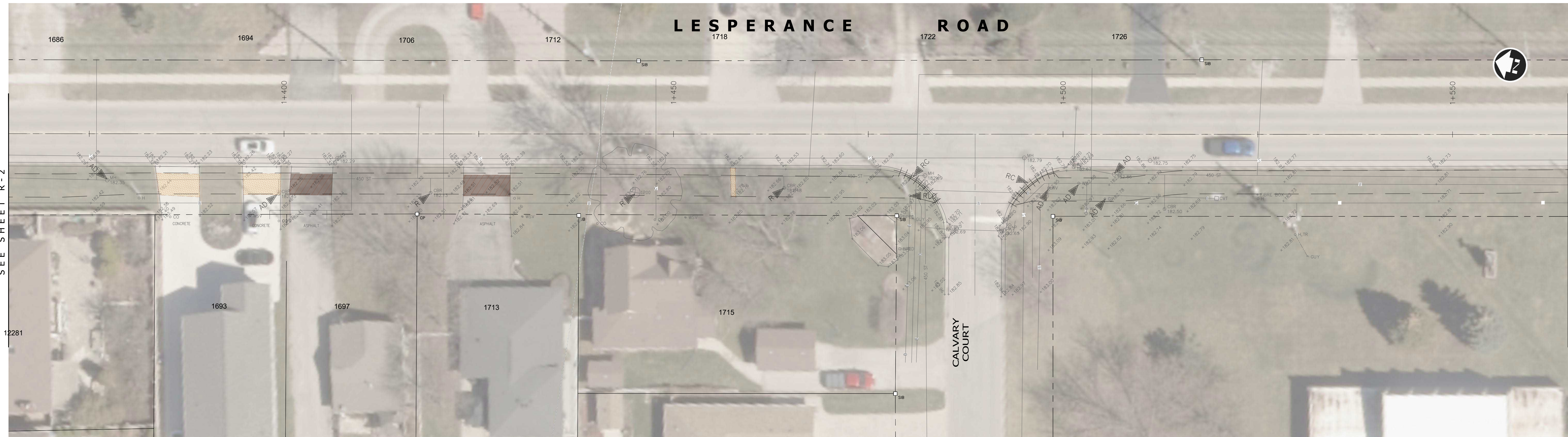


DESIGN	DCR	REVIEWED BY	
DRAWN	DCR	CHECKED BY	
DATE	October 15, 2023		
SCALE	Horizontal 1:250		
No.	ISSUED FOR	DATE	BY
2	TOWN REVIEW 75%	OCT 16/23	DCR
1	TOWN REVIEW - 60%	JUL 2023	DCR

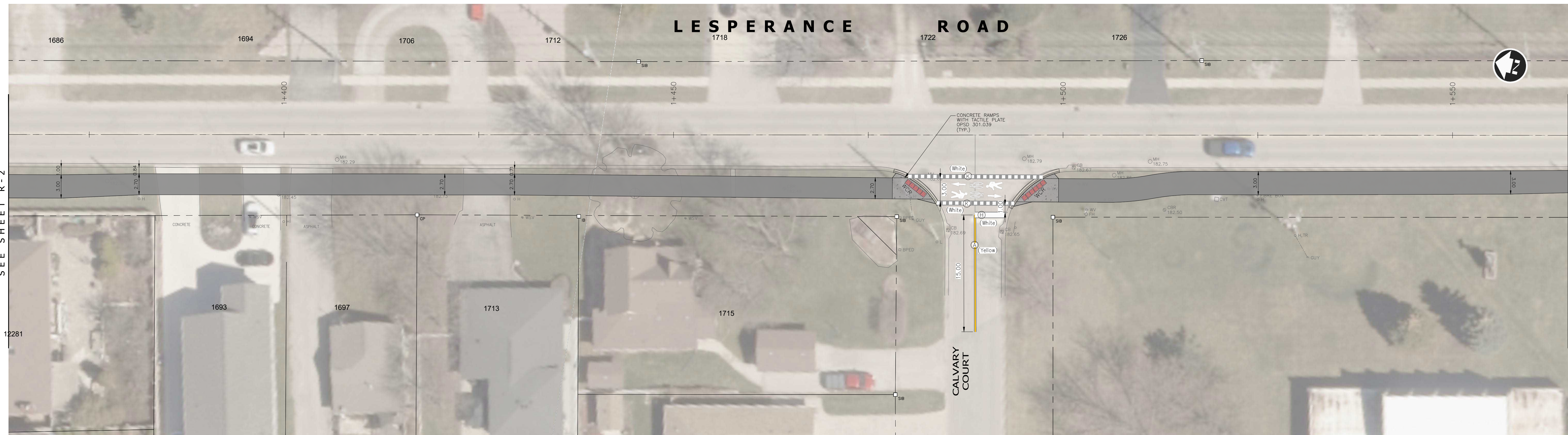
**Lesperance Road Multi-Use Pathway**  
 (County Road 22 to County Road 42)

Existing Conditions, Removals & New Construction

## LESPERANCE ROAD



**EXISTING CONDITIONS & REMOVALS**



**NEW CONSTRUCTION**

DILLON CONSULTING LIMITED 3200 DEZIEL DRIVE, SUITE 608, WINDSOR, ONTARIO, N8W 5K8. PHONE (519) 948-9000, FAX (519) 948-5054

SEE SHEET R - 2

SEE SHEET R - 4

SEE SHEET R - 2

SEE SHEET R - 4

**Conditions of Use**  
 Verify elevations and/or dimensions on drawing prior to use. Report any discrepancies to Dillon Consulting Limited.  
 Do not scale dimensions from drawing.  
 Do not modify drawing, re-use it, or use it for purposes other than those intended at the time of its preparation without prior written permission from Dillon Consulting Limited.



Town of  
**Tecumseh**  
 Ontario, Canada



No.	ISSUED FOR	DATE	BY
2	TOWN REVIEW - 75%	OCT 16/23	DCR
1	TOWN REVIEW - 60%	JUL 2023	DCR

DESIGN	DCR	REVIEWED BY	
DRAWN	DCR	CHECKED BY	
DATE	October 15, 2023		
SCALE	Horizontal 1:250		

**Lesperance Road Multi-Use Pathway**  
 (County Road 22 to County Road 42)

Existing Conditions, Removals & New Construction

**LESPERANCE ROAD**





**EXISTING CONDITIONS & REMOVALS**



**NEW CONSTRUCTION**

DILLON CONSULTING LIMITED 3200 DEZIEL DRIVE, SUITE 608, WINDSOR, ONTARIO, N9W 5K6. PHONE (519) 948-9000. FAX (519) 948-9054

SEE SHEET R - 3

SEE SHEET R - 3

SEE SHEET R - 5

SEE SHEET R - 5

**Conditions of Use**

Verify elevations and/or dimensions on drawing prior to use. Report any discrepancies to Dillon Consulting Limited.  
Do not scale dimensions from drawing.  
Do not modify drawing, re-use it, or use it for purposes other than those intended at the time of its preparation without prior written permission from Dillon Consulting Limited.



Town of  
**Tecumseh**  
Ontario, Canada



No.	ISSUED FOR	DATE	BY
2	TOWN REVIEW 75%	OCT 16/23	DCR
1	TOWN REVIEW - 60%	JUL 20/23	DCR

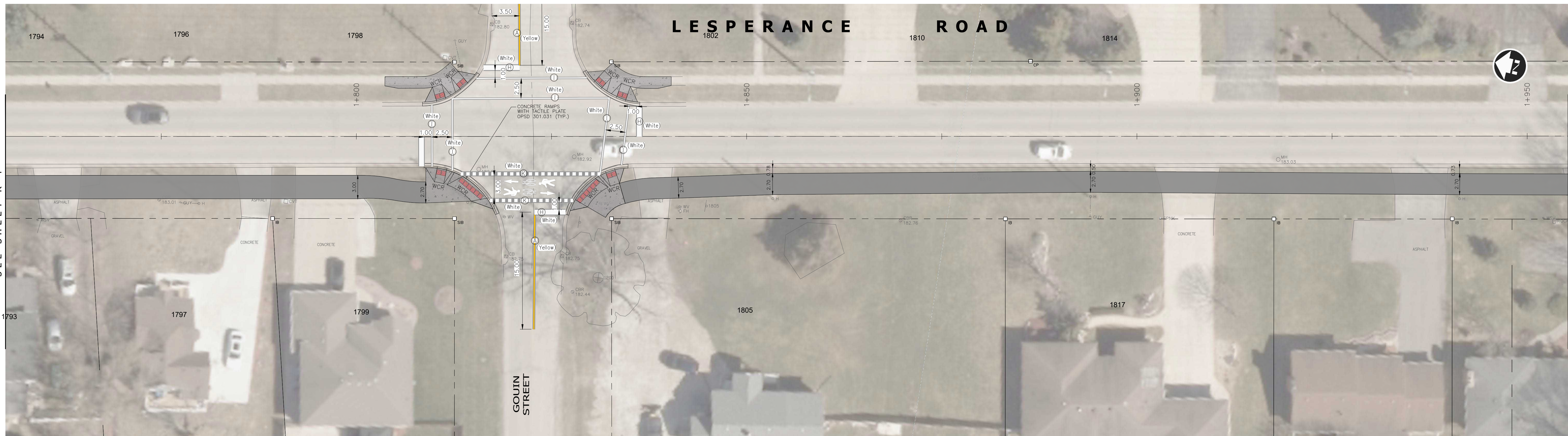
DESIGN	DCR	REVIEWED BY	
DRAWN	DCR	CHECKED BY	
DATE	October 15, 2023		
SCALE	Horizontal 1:250		

**Lesperance Road Multi-Use Pathway**  
(County Road 22 to County Road 42)

Existing Conditions, Removals & New Construction  
**LESPERANCE ROAD**



**EXISTING CONDITIONS & REMOVALS**



**NEW CONSTRUCTION**

DILLON CONSULTING LIMITED 3200 DEZIEL DRIVE, SUITE 608, WINDSOR, ONTARIO, N9W 5K6. PHONE (519) 948-9000, FAX (519) 948-5054

SEE SHEET R - 4

SEE SHEET R - 6

SEE SHEET R - 4

SEE SHEET R - 6

**Conditions of Use**  
 Verify elevations and/or dimensions on drawing prior to use.  
 Report any discrepancies to Dillon Consulting Limited.  
 Do not scale dimensions from drawing.  
 Do not modify drawing, re-use it, or use it for purposes other than those intended at the time of its preparation without prior written permission from Dillon Consulting Limited.



Town of  
**Tecumseh**  
 Ontario, Canada



DESIGN	DCR	REVIEWED BY	
DRAWN	DCR	CHECKED BY	
DATE	October 15, 2023		
SCALE	Horizontal 1:250		
No.	ISSUED FOR	DATE	BY
2	TOWN REVIEW - 75%	OCT 16/23	DCR
1	TOWN REVIEW - 60%	JUL 20/23	DCR

**Lesperance Road Multi-Use Pathway**  
 (County Road 22 to County Road 42)

Existing Conditions, Removals & New Construction

**LESPERANCE ROAD**



**EXISTING CONDITIONS & REMOVALS**



**NEW CONSTRUCTION**

DILLON CONSULTING LIMITED 3200 DEZIEL DRIVE, SUITE 608, WINDSOR, ONTARIO, N9W 8K6, PHONE (519) 948-9000, FAX (519) 948-5054

SEE SHEET R-5

SEE SHEET R-5

SEE SHEET R-7

SEE SHEET R-7

**Conditions of Use**  
 Verify elevations and/or dimensions on drawing prior to use. Report any discrepancies to Dillon Consulting Limited.  
 Do not scale dimensions from drawing.  
 Do not modify drawing, re-use it, or use it for purposes other than those intended at the time of its preparation without prior written permission from Dillon Consulting Limited.



Town of  
**Tecumseh**  
 Ontario, Canada



No.	ISSUED FOR	DATE	BY
2	TOWN REVIEW 75%	OCT 16/23	DCR
1	TOWN REVIEW - 60%	JUL 2023	DCR

DESIGN	DCR	REVIEWED BY	
DRAWN	DCR	CHECKED BY	
DATE	October 15, 2023		
SCALE	Horizontal 1:250		

**Lesperance Road Multi-Use Pathway**  
 (County Road 22 to County Road 42)

Existing Conditions, Removals & New Construction  
**LESPERANCE ROAD**

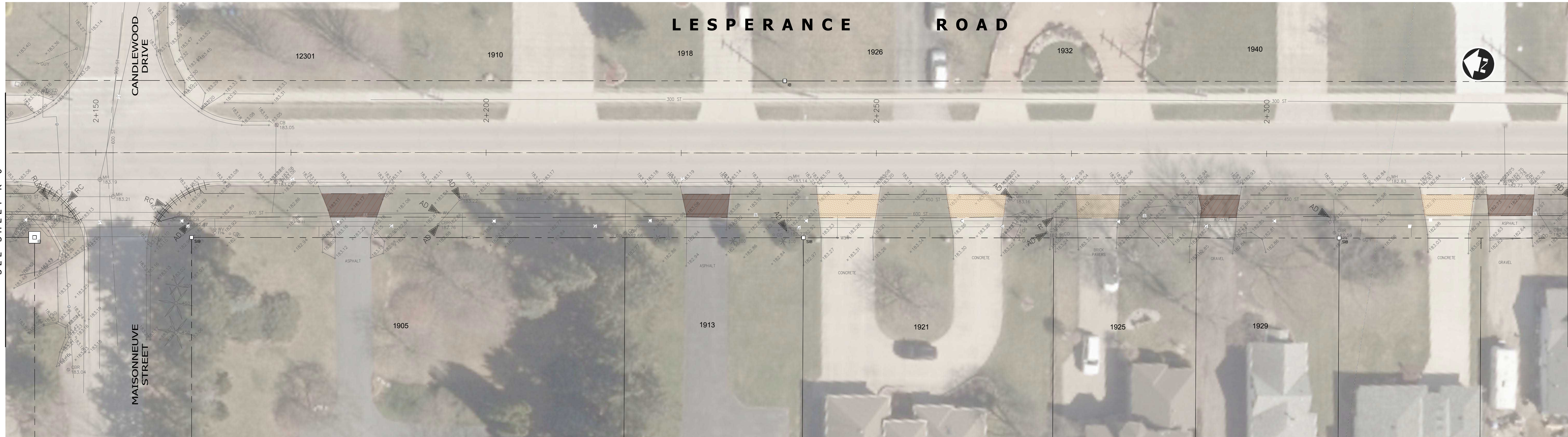
DILLON CONSULTING LIMITED 3200 DEZIEL DRIVE, SUITE 608, WINDSOR, ONTARIO, N9W 5K6, PHONE (519) 948-9000, FAX (519) 948-5054

SEE SHEET R - 6

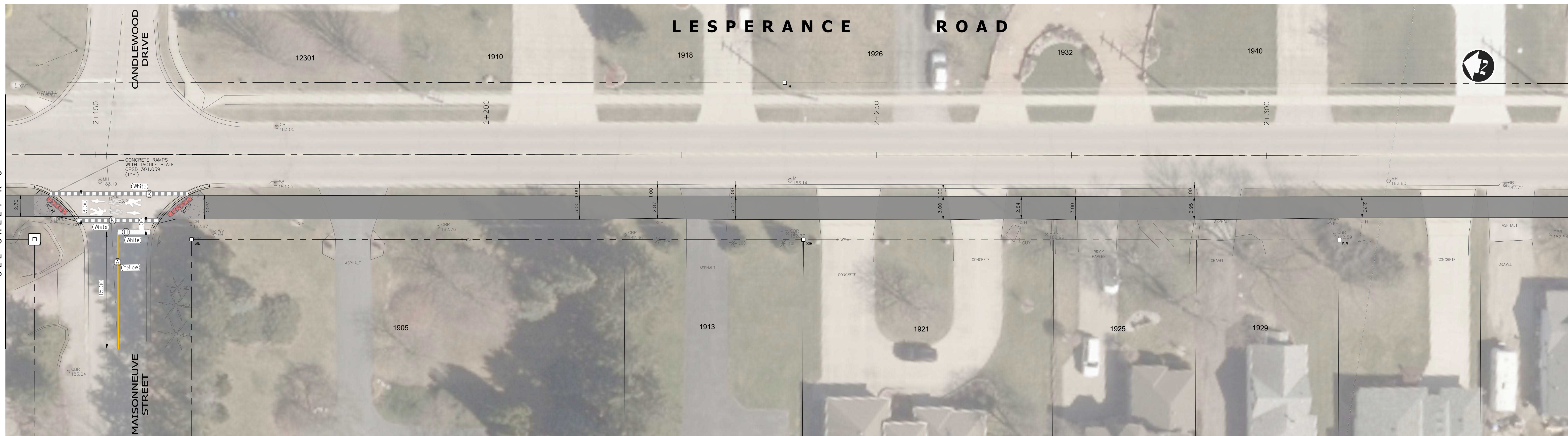
SEE SHEET R - 6

SEE SHEET R - 8

SEE SHEET R - 8



**EXISTING CONDITIONS & REMOVALS**



**NEW CONSTRUCTION**

**Conditions of Use**  
 Verify elevations and/or dimensions on drawing prior to use. Report any discrepancies to Dillon Consulting Limited.  
 Do not scale dimensions from drawing.  
 Do not modify drawing, re-use it, or use it for purposes other than those intended at the time of its preparation without prior written permission from Dillon Consulting Limited.



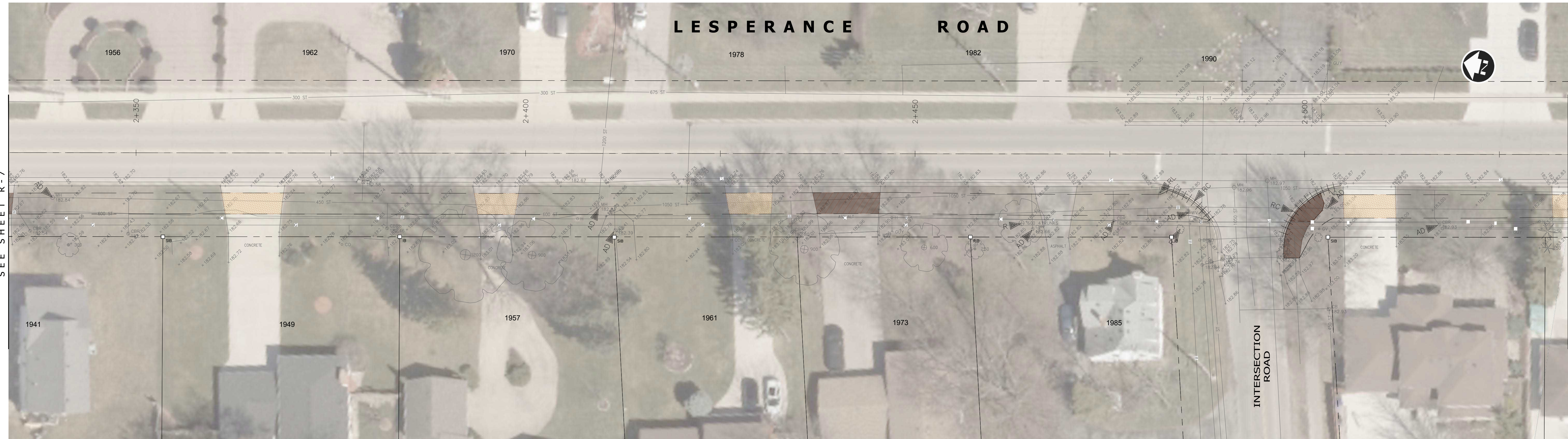
Town of  
**Tecumseh**  
 Ontario, Canada



DESIGN	DCR	REVIEWED BY	
DRAWN	DCR	CHECKED BY	
DATE	October 15, 2023		
SCALE	Horizontal 1:250		
2	TOWN REVIEW - 75%	OCT 16/23	DCR
1	TOWN REVIEW - 60%	JUL 20/23	DCR
No.	ISSUED FOR	DATE	BY

**Lesperance Road Multi-Use Pathway**  
 (County Road 22 to County Road 42)

Existing Conditions, Removals & New Construction  
**LESPERANCE ROAD**



**EXISTING CONDITIONS & REMOVALS**



**NEW CONSTRUCTION**

DILLON CONSULTING LIMITED 3200 DEZIEL DRIVE, SUITE 608, WINDSOR, ONTARIO, N9W 5K6. PHONE (519) 948-9000, FAX (519) 948-5054

SEE SHEET R-7

SEE SHEET R-7

SEE SHEET R-9

SEE SHEET R-9

**Conditions of Use**  
 Verify elevations and/or dimensions on drawing prior to use. Report any discrepancies to Dillon Consulting Limited.  
 Do not scale dimensions from drawing.  
 Do not modify drawing, re-use it, or use it for purposes other than those intended at the time of its preparation without prior written permission from Dillon Consulting Limited.



Town of  
**Tecumseh**  
 Ontario, Canada



DESIGN	DCR	REVIEWED BY	
DRAWN	DCR	CHECKED BY	
DATE	October 15, 2023	SCALE	Horizontal 1:250
2	TOWN REVIEW 75%	OCT 16/23	DCR
1	TOWN REVIEW - 60%	JUL 20/23	DCR
No.	ISSUED FOR	DATE	BY

<b>Lesperance Road Multi-Use Pathway</b> (County Road 22 to County Road 42)	
Existing Conditions, Removals & New Construction	
<b>LESPERANCE ROAD</b>	



**EXISTING CONDITIONS & REMOVALS**



**NEW CONSTRUCTION**

DILLON CONSULTING LIMITED 3200 DEZIEL DRIVE, SUITE 608, WINDSOR, ONTARIO, N9W 5K6. PHONE (519) 948-9000, FAX (519) 948-5054

SEE SHEET R-8

SEE SHEET R-10

SEE SHEET R-8

SEE SHEET R-10

**Conditions of Use**  
 Verify elevations and/or dimensions on drawing prior to use. Report any discrepancies to Dillon Consulting Limited.  
 Do not scale dimensions from drawing.  
 Do not modify drawing, re-use it, or use it for purposes other than those intended at the time of its preparation without prior written permission from Dillon Consulting Limited.



Town of  
**Tecumseh**  
 Ontario, Canada



DESIGN	DCR	REVIEWED BY	
DRAWN	DCR	CHECKED BY	
DATE	October 15, 2023		
SCALE	Horizontal 1:250		
2	TOWN REVIEW - 75%	OCT 16/23	DCR
1	TOWN REVIEW - 60%	JUL 20/23	DCR
No.	ISSUED FOR	DATE	BY

**Lesperance Road Multi-Use Pathway**  
 (County Road 22 to County Road 42)

Existing Conditions, Removals & New Construction  
**LESPERANCE ROAD**



**EXISTING CONDITIONS & REMOVALS**



**NEW CONSTRUCTION**

DILLON CONSULTING LIMITED 3200 DEZIEL DRIVE, SUITE 608, WINDSOR, ONTARIO, N9W 5K8. PHONE (519) 948-9000, FAX (519) 948-9054

SEE SHEET R - 9

SEE SHEET R - 11

SEE SHEET R - 9

SEE SHEET R - 11

**Conditions of Use**  
 Verify elevations and/or dimensions on drawing prior to use. Report any discrepancies to Dillon Consulting Limited.  
 Do not scale dimensions from drawing.  
 Do not modify drawing, re-use it, or use it for purposes other than those intended at the time of its preparation without prior written permission from Dillon Consulting Limited.



Town of  
**Tecumseh**  
 Ontario, Canada



DESIGN	DCR	REVIEWED BY	
DRAWN	DCR	CHECKED BY	
DATE	October 15, 2023	SCALE	Horizontal 1:250
2	TOWN REVIEW - 75%	OCT 16/23	DCR
1	TOWN REVIEW - 60%	JUL 20/23	DCR
No.	ISSUED FOR	DATE	BY

**Lesperance Road Multi-Use Pathway**  
 (County Road 22 to County Road 42)

Existing Conditions, Removals & New Construction  
**LESPERANCE ROAD**



**EXISTING CONDITIONS & REMOVALS**



**NEW CONSTRUCTION**

DILLON CONSULTING LIMITED 3200 DEZEL DRIVE, SUITE 608, WINDSOR, ONTARIO, N9W 5K6. PHONE (519) 948-9000, FAX (519) 948-9054

SEE SHEET R-10

SEE SHEET R-12

SEE SHEET R-10

SEE SHEET R-12

**Conditions of Use**  
 Verify elevations and/or dimensions on drawing prior to use. Report any discrepancies to Dillon Consulting Limited.  
 Do not scale dimensions from drawing.  
 Do not modify drawing, re-use it, or use it for purposes other than those intended at the time of its preparation without prior written permission from Dillon Consulting Limited.



Town of  
**Tecumseh**  
 Ontario, Canada



DESIGN	DCR	REVIEWED BY	
DRAWN	DCR	CHECKED BY	
DATE	October 15, 2023	SCALE	Horizontal 1:250
2	TOWN REVIEW 75%	OCT 16/23	DCR
1	TOWN REVIEW - 60%	JUL 20/23	DCR
No.	ISSUED FOR	DATE	BY

**Lesperance Road Multi-Use Pathway**  
 (County Road 22 to County Road 42)

Existing Conditions, Removals & New Construction

**LESPERANCE ROAD**



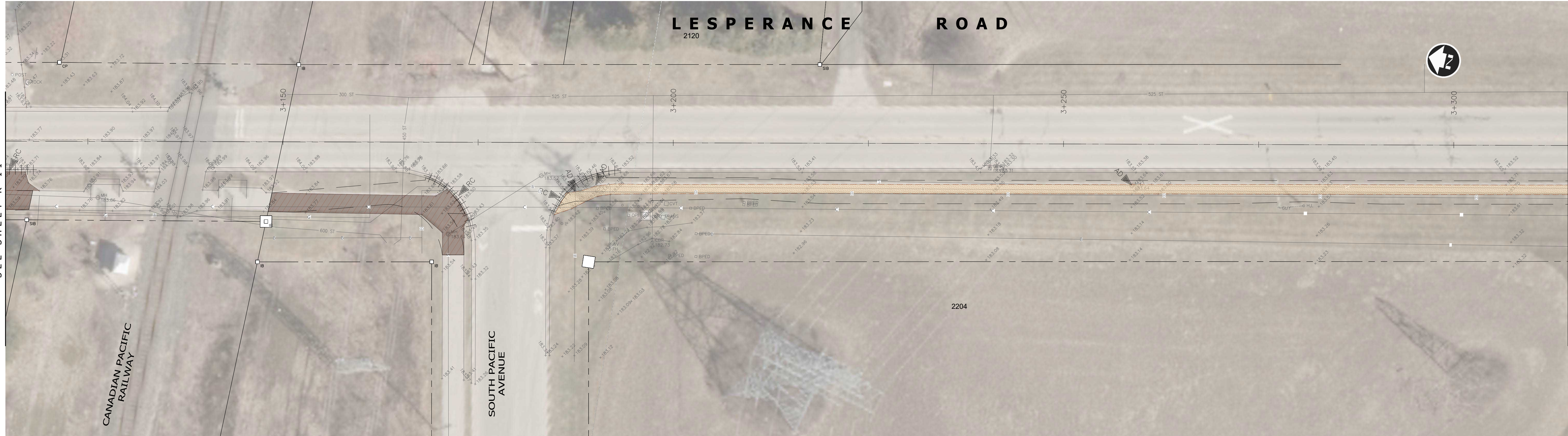
DILLON CONSULTING LIMITED 3200 DEZIEL DRIVE, SUITE 608, WINDSOR, ONTARIO, N9W 5K6. PHONE (519) 948-9000, FAX (519) 948-9054

SEE SHEET R-11

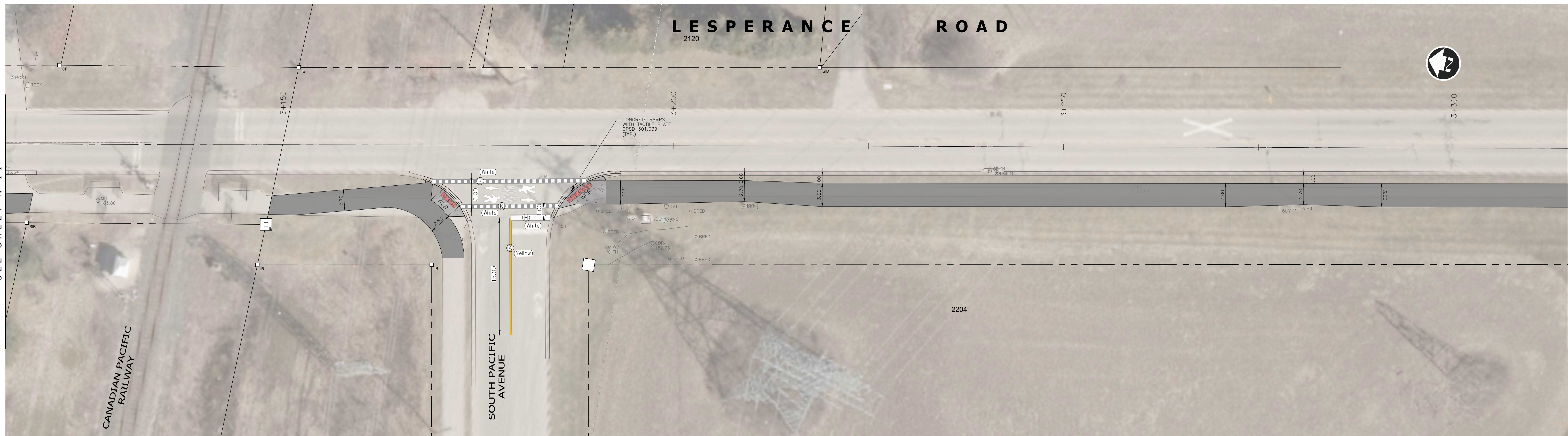
SEE SHEET R-11

SEE SHEET R-13

SEE SHEET R-13



**EXISTING CONDITIONS & REMOVALS**



**NEW CONSTRUCTION**

**Conditions of Use**  
 Verify elevations and/or dimensions on drawing prior to use. Report any discrepancies to Dillon Consulting Limited.  
 Do not scale dimensions from drawing.  
 Do not modify drawing, re-use it, or use it for purposes other than those intended at the time of its preparation without prior written permission from Dillon Consulting Limited.



Town of  
**Tecumseh**  
 Ontario, Canada



No.	ISSUED FOR	DATE	BY
2	TOWN REVIEW - 75%	OCT 16/23	DCR
1	TOWN REVIEW - 60%	JUL 20/23	DCR

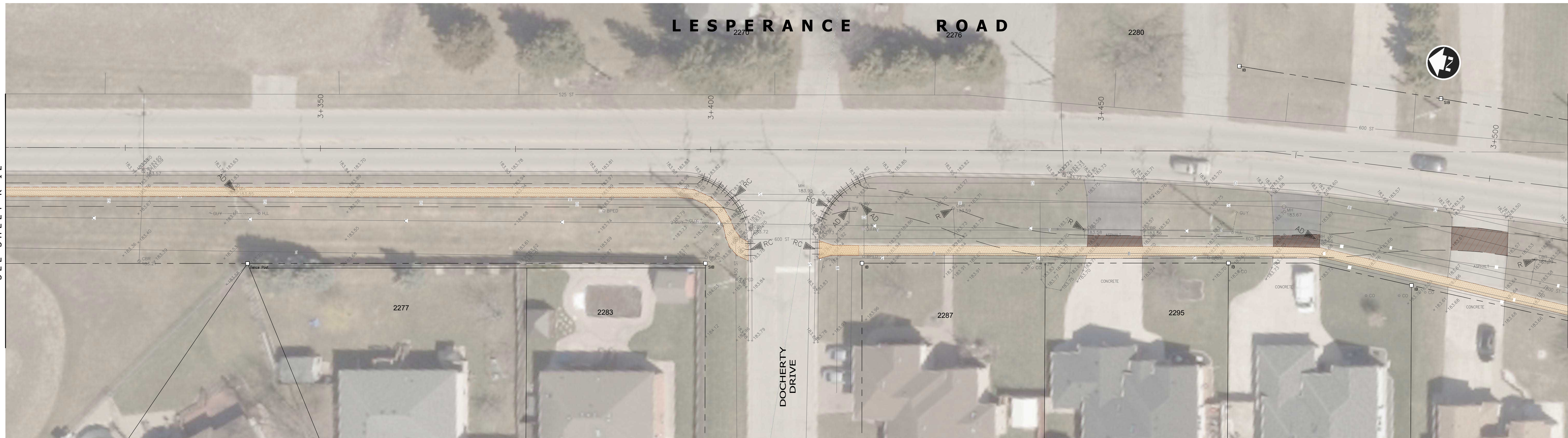
DESIGN	DCR	REVIEWED BY	
DRAWN	DCR	CHECKED BY	
DATE	October 15, 2023		
SCALE	Horizontal 1:250		

**Lesperance Road Multi-Use Pathway**  
 (County Road 22 to County Road 42)

Existing Conditions, Removals & New Construction

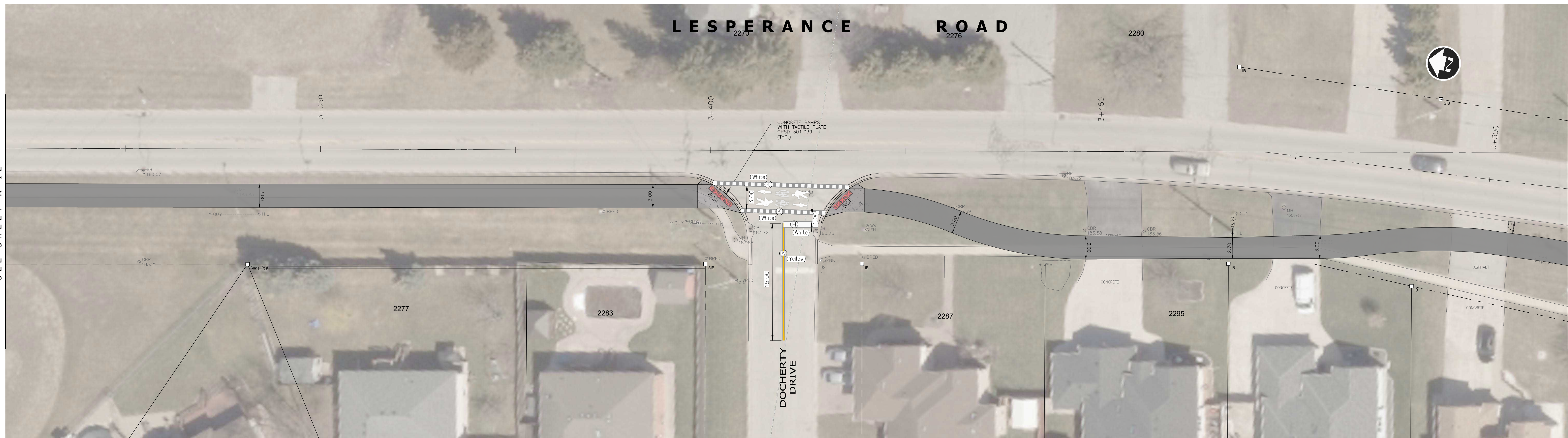
**LESPERANCE ROAD**

**LESPERANCE ROAD**



**EXISTING CONDITIONS & REMOVALS**

**LESPERANCE ROAD**



**NEW CONSTRUCTION**

DILLON CONSULTING LIMITED 3200 DEZIEL DRIVE, SUITE 608, WINDSOR, ONTARIO, N9W 5K6. PHONE (519) 948-9000, FAX (519) 948-5054

SEE SHEET R-12

SEE SHEET R-12

SEE SHEET R-14

SEE SHEET R-14

**Conditions of Use**  
 Verify elevations and/or dimensions on drawing prior to use. Report any discrepancies to Dillon Consulting Limited.  
 Do not scale dimensions from drawing.  
 Do not modify drawing, re-use it, or use it for purposes other than those intended at the time of its preparation without prior written permission from Dillon Consulting Limited.



Town of  
**Tecumseh**  
 Ontario, Canada



DESIGN	DCR	REVIEWED BY	
DRAWN	DCR	CHECKED BY	
DATE	October 15, 2023	SCALE	Horizontal 1:250
2	TOWN REVIEW - 75%	OCT 16/23	DCR
1	TOWN REVIEW - 60%	JUL 20/23	DCR
No.	ISSUED FOR	DATE	BY

**Lesperance Road Multi-Use Pathway**  
 (County Road 22 to County Road 42)

Existing Conditions, Removals & New Construction

**LESPERANCE ROAD**

**LESPERANCE ROAD**



**EXISTING CONDITIONS & REMOVALS**

**LESPERANCE ROAD**



**NEW CONSTRUCTION**

DILLON CONSULTING LIMITED 3200 DEZIEL DRIVE, SUITE 608, WINDSOR, ONTARIO, N8W 8K6. PHONE (519) 948-9000, FAX (519) 948-5054

SEE SHEET R-13

SEE SHEET R-13

SEE SHEET R-15

SEE SHEET R-15

**Conditions of Use**  
 Verify elevations and/or dimensions on drawing prior to use. Report any discrepancies to Dillon Consulting Limited.  
 Do not scale dimensions from drawing.  
 Do not modify drawing, re-use it, or use it for purposes other than those intended at the time of its preparation without prior written permission from Dillon Consulting Limited.



Town of  
**Tecumseh**  
 Ontario, Canada

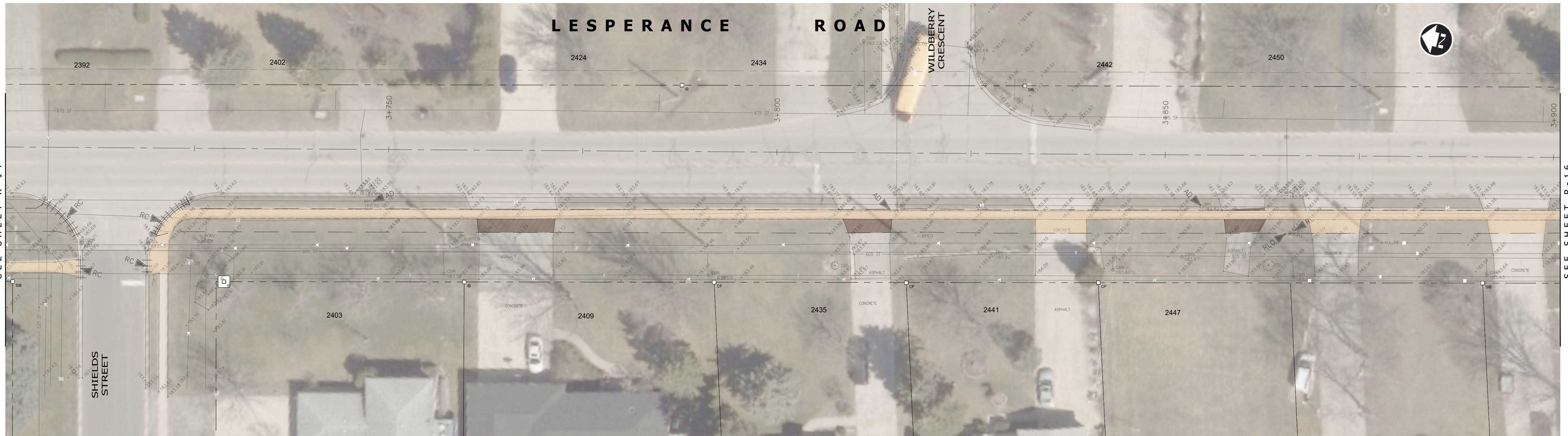


DESIGN	DCR	REVIEWED BY	
DRAWN	DCR	CHECKED BY	
DATE	October 15, 2023	SCALE	Horizontal 1:250
2	TOWN REVIEW - 75%	OCT 16/23	DCR
1	TOWN REVIEW - 60%	JUL 2023	DCR
No.	ISSUED FOR	DATE	BY

**Lesperance Road Multi-Use Pathway**  
 (County Road 22 to County Road 42)

Existing Conditions, Removals & New Construction

**LESPERANCE ROAD**



**EXISTING CONDITIONS & REMOVALS**



**NEW CONSTRUCTION**

DILLON CONSULTING LIMITED 3200 DEZIEL DRIVE, SUITE 608, WINDSOR, ONTARIO, N9W 5K6, PHONE (519) 948-9000, FAX (519) 948-5054

SEE SHEET R-14

SEE SHEET R-14

SEE SHEET R-16

SEE SHEET R-16

**Conditions of Use**  
 Verify elevations and/or dimensions on drawing prior to use. Report any discrepancies to Dillon Consulting Limited.  
 Do not scale dimensions from drawing.  
 Do not modify drawing, re-use it, or use it for purposes other than those intended at the time of its preparation without prior written permission from Dillon Consulting Limited.



Town of  
**Tecumseh**  
 Ontario, Canada



DESIGN	DCR	REVIEWED BY	
DRAWN	DCR	CHECKED BY	
DATE	October 15, 2023	SCALE	Horizontal 1:250
2	TOWN REVIEW 75%	OCT 16/23	DCR
1	TOWN REVIEW - 60%	JUL 20/23	DCR
No.	ISSUED FOR	DATE	BY

**Lesperance Road Multi-Use Pathway**  
 (County Road 22 to County Road 42)

Existing Conditions, Removals & New Construction

**LESPERANCE ROAD**



**EXISTING CONDITIONS & REMOVALS**



**NEW CONSTRUCTION**

DILLON CONSULTING LIMITED 3200 DEZIEL DRIVE, SUITE 608, WINDSOR, ONTARIO, N9W 8K6. PHONE (519) 948-9000, FAX (519) 948-5054

SEE SHEET R-15

SEE SHEET R-17

SEE SHEET R-15

SEE SHEET R-17

**Conditions of Use**  
 Verify elevations and/or dimensions on drawing prior to use. Report any discrepancies to Dillon Consulting Limited.  
 Do not scale dimensions from drawing.  
 Do not modify drawing, re-use it, or use it for purposes other than those intended at the time of its preparation without prior written permission from Dillon Consulting Limited.



Town of  
**Tecumseh**  
 Ontario, Canada



No.	ISSUED FOR	DATE	BY
2	TOWN REVIEW 75%	OCT 16/23	DCR
1	TOWN REVIEW - 60%	JUL 20/23	DCR

DESIGN	DCR	REVIEWED BY	
DRAWN	DCR	CHECKED BY	
DATE	October 15, 2023		
SCALE	Horizontal 1:250		

**Lesperance Road Multi-Use Pathway**  
 (County Road 22 to County Road 42)

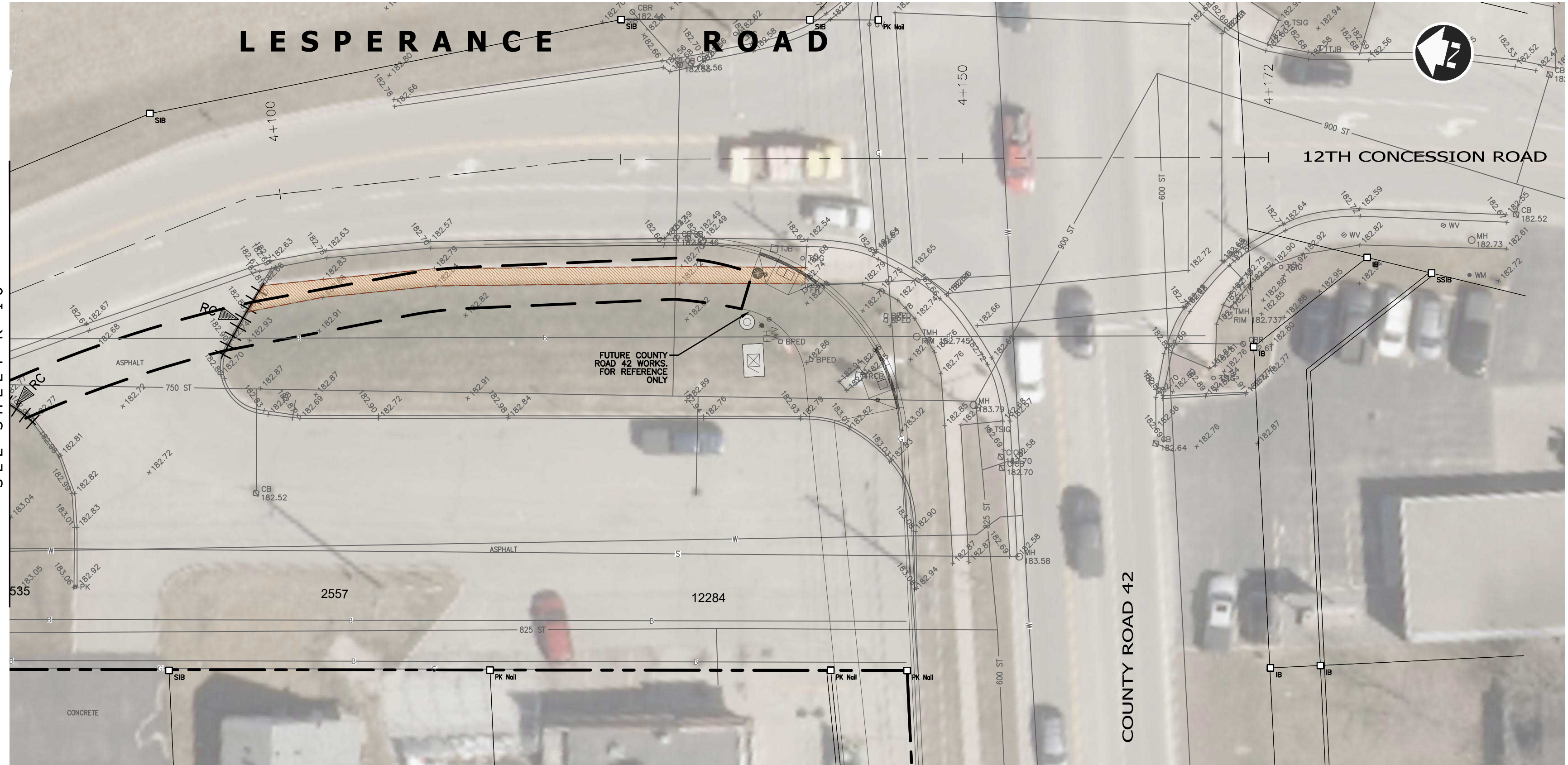
Existing Conditions, Removals & New Construction

**LESPERANCE ROAD**

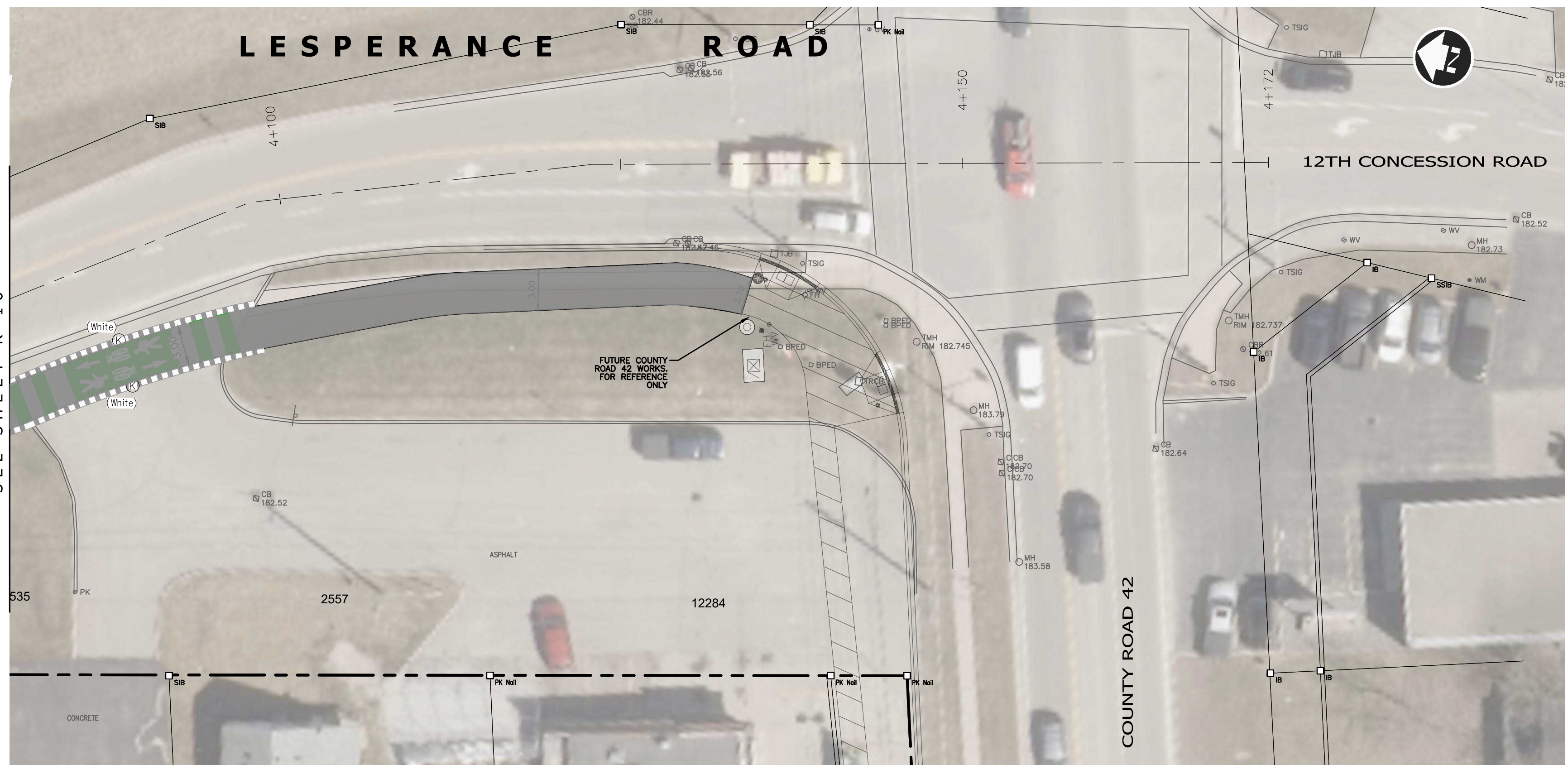
DILLON CONSULTING LIMITED 3200 DEZIEL DRIVE, SUITE 608, WINDSOR, ONTARIO, N9W 5K6. PHONE (519) 948-9000, FAX (519) 948-5054

SEE SHEET R-16

SEE SHEET R-16



**EXISTING CONDITIONS & REMOVALS**



**NEW CONSTRUCTION**

**Conditions of Use**  
 Verify elevations and/or dimensions on drawing prior to use. Report any discrepancies to Dillon Consulting Limited.  
 Do not scale dimensions from drawing.  
 Do not modify drawing, re-use it, or use it for purposes other than those intended at the time of its preparation without prior written permission from Dillon Consulting Limited.



Town of  
**Tecumseh**  
 Ontario, Canada



DESIGN	DCR	REVIEWED BY	
DRAWN	DCR	CHECKED BY	
DATE	October 15, 2023		
SCALE	Horizontal 1:250		
No.	ISSUED FOR	DATE	BY
2	TOWN REVIEW 75%	OCT 16/23	DCR
1	TOWN REVIEW - 60%	JUL 2023	DCR

**Lesperance Road Multi-Use Pathway**  
 (County Road 22 to County Road 42)

Existing Conditions, Removals & New Construction  
**LESPERANCE ROAD**